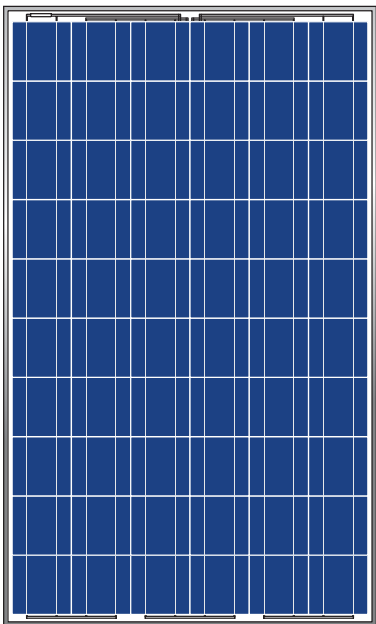


JAP6

60/200-250 SOLAR PHOTOVOLTAIC MODULE



PRODUCT OVERVIEW

- JA Solar' s modules are optimally manufactured and adjusted to meet the needs of the current market; scientifically designed module dimension makes the installation simple and easy; each cell of the module is the acclaimed "Made by JA Solar".
- Our continuous efforts in quality assurance system and certifications the international authentication institutions of JA Solar' s products demonstrate our commitment to product quality and customer requirements.

MODULE CHARACTERISTICS

- High efficiency crystalline silicon solar cells.
- High transmission low iron tempered glass, strong mechanical resistance.
- Standard waterproof junction box, with bypass diode.
- High endurance to different atrocious weather.
- Custom designed modules according to clients' requirement.

MECHANICAL PARAMETERS

| | |
|--------------------------------------------|---------------------|
| Cell(mm) | Poly 156×156 |
| Weight(kg) | 19.5 |
| Dimensions(L×W×H)(mm) | 1650×991×40 (or×46) |
| Cable Length(mm) | ≥1000 |
| Cable cross section size(mm ²) | 4 |
| No. of cells and connections | 60 (10×6) |
| No. of diodes | 3 |
| Packing configuration | 25/21pcs/carton |

WORKING CONDITIONS

| | |
|-------------------------|--------------------------|
| Maximum System Voltage | DC 1000V(TÜV) / 600V(UL) |
| Operating Temp. | -40°C~+85°C |
| Maximum Series Fuse (A) | 13 |
| Static loading | ≤5400Pa |
| Grounding conductivity | <0.1Ω |
| NOCT | 47±2°C |
| Application Class | Class A |
| Insulation Resistance | ≥100MΩ |

GUARANTEE

5-year limited product warranty

Limited performance warranty: 10 years at 90% of the minimal rated power output, 25 years at 80% of the minimal rated power output

JA SOLAR HOLDINGS CO., LTD.

No. 36, Jiang Chang San Road, Zhabei, Shanghai, China, 200436

Tel: +86 (21) 6095 5999 /6095 5888 Fax: +86 (21) 6095 5959 /6095 5858

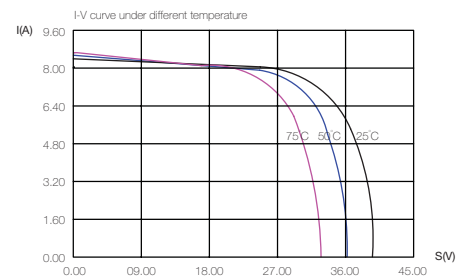
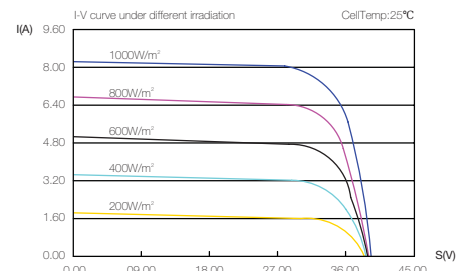
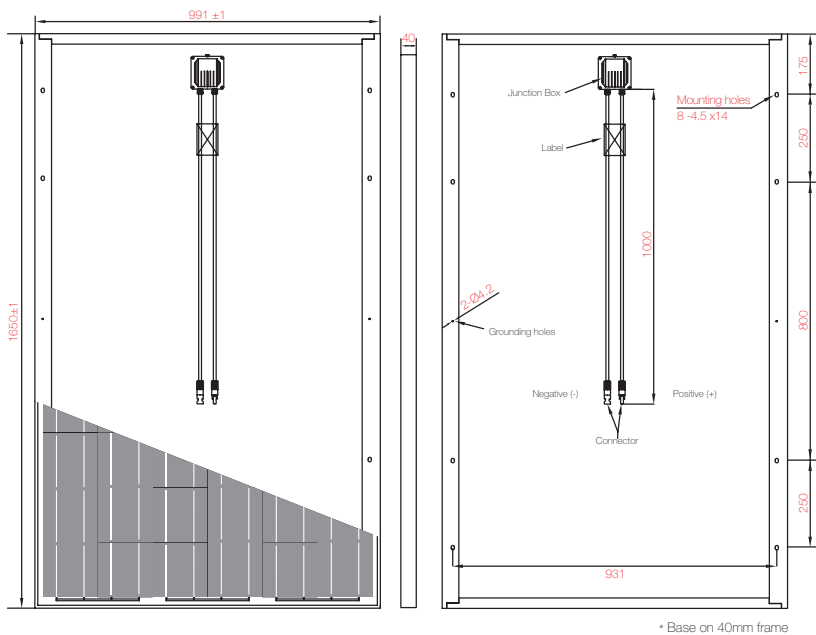


JAP6

60/200-250 SOLAR PHOTOVOLTAIC MODULE

I-V CURVE

Output under different irradiation and the correlation between Isc/Voc/ Pmax and Temperature map



ELECTRICAL PARAMETERS

| TYPE | JAP6-60-200 | JAP6-60-205 | JAP6-60-210 | JAP6-60-215 | JAP6-60-220 | JAP6-60-225 | JAP6-60-230 | JAP6-60-235 | JAP6-60-240 | JAP6-60-245 | JAP6-60-250 |
|--------------------------------|-------------|-------------|-------------|-------------|-------------|-------------|-------------|-------------|-------------|-------------|-------------|
| Rated Maximum Power at STC (W) | 200 | 205 | 210 | 215 | 220 | 225 | 230 | 235 | 240 | 245 | 250 |
| Open Circuit Voltage (Voc/V) | 36.15 | 36.32 | 36.49 | 36.66 | 36.83 | 37 | 37.17 | 37.34 | 37.51 | 37.68 | 37.85 |
| Maximum Power Voltage (Vmp/V) | 28.12 | 28.32 | 28.52 | 28.72 | 28.92 | 29.12 | 29.32 | 29.52 | 29.72 | 29.92 | 30.12 |
| Short Circuit Current (Isc/A) | 7.8 | 7.89 | 7.97 | 8.06 | 8.14 | 8.23 | 8.31 | 8.4 | 8.48 | 8.57 | 8.65 |
| Maximum Power Current (Imp/A) | 7.11 | 7.24 | 7.36 | 7.49 | 7.61 | 7.73 | 7.84 | 7.96 | 8.08 | 8.19 | 8.3 |
| Power Tolerance | ±3% | | | | | | | | | | |
| α_{Isc} | 0.040%/°C | | | | | | | | | | |
| β_{Voc} | -0.304%/°C | | | | | | | | | | |
| γ_{Pmp} | -0.420%/°C | | | | | | | | | | |

JA SOLAR HOLDINGS CO., LTD.

No. 36, Jiang Chang San Road, Zhabei, Shanghai, China, 200436

Tel: +86 (21) 6095 5999 /6095 5888 Fax: +86 (21) 6095 5959 /6095 5858

